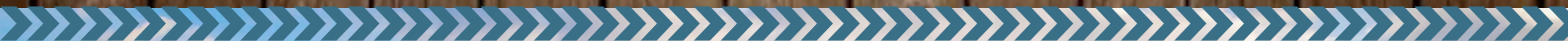




VITHAUS



PREFABRICATED HOUSES KOSHAUS

MANUFACTURE
DESIGN
SALE



VITHAUS company

we produce standard and individual
prefabricated wooden houses and
export houses to Europe

WE OFFER

PREFABRICATED WOODEN HOUSES

ACCORDING TO STANDARD AND INDIVIDUAL PROJECTS

Standard modular houses are represented by lines KOSHAUS. These series of houses consist of mobile modules with complete finishing and engineering networks, are easily transported and quickly installed on the land plot in a ready-made residential building.



STANDARD MODULAR HOUSES

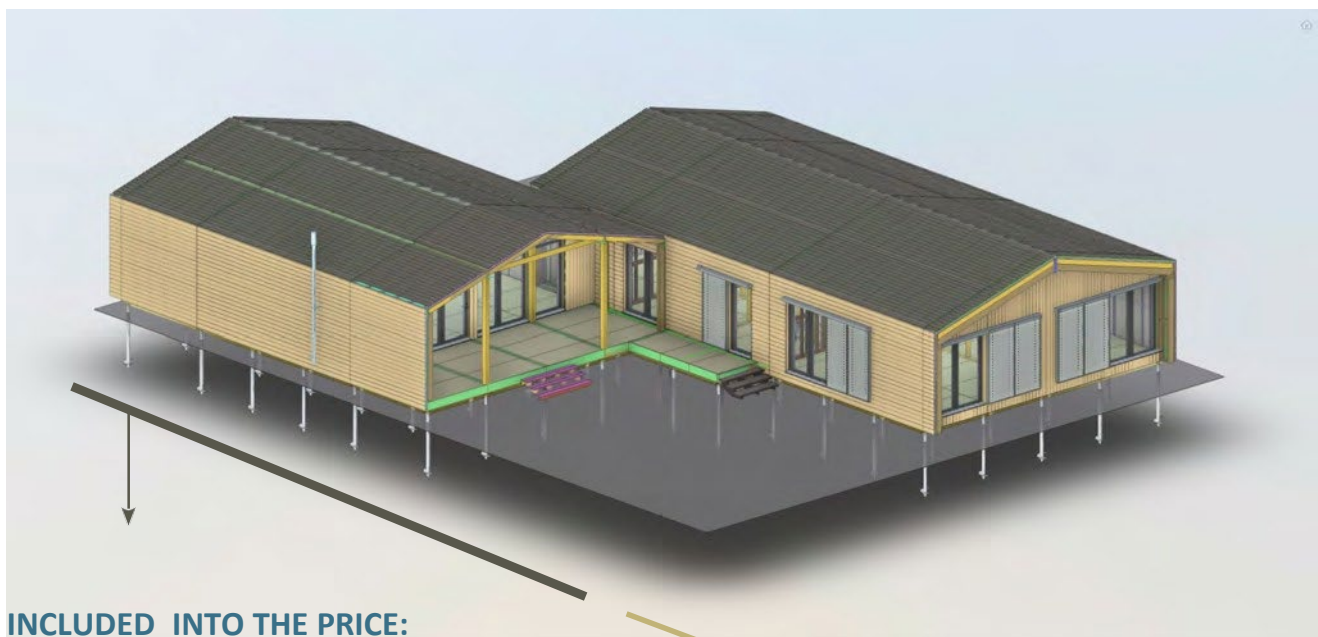
consist of mobile modules that form a modern, living space, ready for living

The modular houses are manufactured at the factory, providing furniture quality, full control of the entire production cycle and the last but not the least - high technology and cost reduction of the whole project. The house is transported in a finished and assembled way and then mounted on the plot of land within a few days.





What is included into the price:



INCLUDED INTO THE PRICE:

House (main modules)

The modules of the house with a spacious living room, bedrooms, a study, a hallway, a closet, a bathroom depending on the size of the house. External dimensions, house area are based on the selected model of the house.

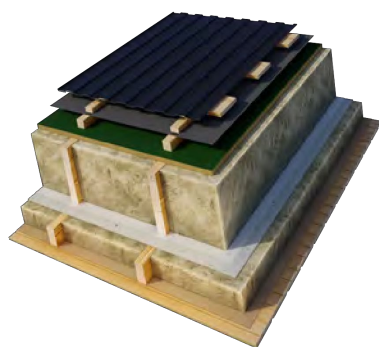
ADDITIONAL OPTIONS:

- The veranda is the addition to the house, which protects it from the hot sun rays in summer, and in winter lets the sunshine in, heating up the house;
- Roof overlaps at the back of the house protect the back facade and stained glass windows from rain;
- The porch is most often installed at the main entrance to the house;
- Canopy over the porch is installed to protect the entrance area from rain and snow;
- Terrace. Its area and quantity depend on the customer's wish;
- Stairs can be of any size and in any quantity.

The section of the roof with the interior finishing of the ceiling with wood. Option 1.
Class A:



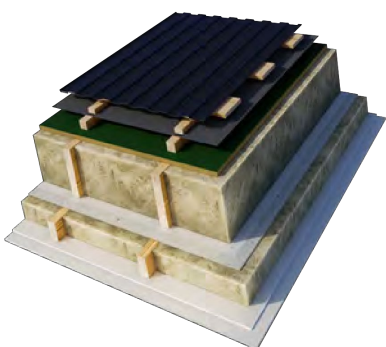
The section of the roof with the interior finishing of the ceiling with wood. Option 1.
Class A+:



The section of the roof with the interior finishing of the ceiling with paintable drywall. Option 2.
Class A:



The section of the roof with the interior finishing of the ceiling with paintable drywall. Option 2. Class A+:



TECHNICAL DATA

Energy efficiency class A

Roof: 379 mm = 6,79 m² K/W, U = 0,147
Walls: 309 mm = 5,25 m² K/W, U = 0,190 Floor:
294 mm = 5,08 m² K/W, U = 0,197 Windows:
wooden profile 78 mm, U = 1,00

Energy efficiency class A+

Roof: 452 mm = 8,08 m² K/W, U = 0,124
Walls: 309 mm = 5,25 m² K/W, U = 0,190
Floor: 294 mm = 5,08 m² K/W, U = 0,197
Windows: 78 mm U = 1,00

1. Roof construction (From outside to inside):

Roofing covering:

metal profiled sheets (panels for roofs, color – graphite gray RAL 7024, matte.

Roof wooden crate: antiseptic planed board, pine – 23×170 mm.

Counter-bars: antiseptic planed bar, pine – 50×50 mm.

Condensation protection: diffusion membrane for roofing 135 g/m² – 1 mm.

Wood-fiber windproof plate 25 mm., P=180kg/m³

Reinforced frame: antiseptic planed bar, pine – 50×250 mm.

Thermal insulation: stone wool 30-35 kg/m³ – 250 mm.

Internal insulation of a frame: vapour barrier film – P=90g/m², 1 mm.

OSB-3 P=650 kg/m³ - 18 mm.

Wood-fiber sound insulation board with grooves P= 180 kg/m³, 50mm.

Gypsum chipboard fire-resistant P=1200 kg/m³ - 12 mm.

2. Walls construction (From outside to inside)+

Facade (outer wall surfaces along the roof slope):
 metal profiled sheet, graphite gray RAL 7024, matt.
 Back facade (outer surfaces of the walls across the ridge):
 planed board; SIKKENS coating, graphite gray - 20 mm.
 Antiseptic wooden crate: 20 × 120 mm, pine.
 Antiseptic wooden counter-bar: 35-55 mm.
 Fiberboard - 25 mm, P=180 kg/m³ pine. .
 Reinforced antiseptic frame: 50 × 190 mm, pine.
 Insulation: stone wool 45-50 kg / m³ - 200 mm.
 Internal insulation of the frame: vapor barrier film, P=90 g/m².
 OSB-3, moisture resistant, for structural rigidity - P=650 kg/m³, 12 mm.
 Fiberboard sound insulation board with grooves P=180 kg/m³, 50mm.
 Gypsum particle board, fire resistant, P=1200 kg / m³ - 12 mm.

Section of the exterior walls with interior pine cladding Class A / A+:



Section of the external walls with interior drywall finishing. Class A / A+:



3. Basic construction of interior walls

Wooden frame:

Gypsum particle board, fire resistant, 1200 kg / m³ - 12 mm.
 Reinforced antiseptic frame: 50-150 mm, pine.
 Insulation: stone wool 45-50 kg / m³ - 150 mm.
 OSB-3, moisture resistant, for structural rigidity - P=650 kg/m³, 12 mm.
 Gypsum particle board, fire resistant, P=1200 kg / m³ - 12 mm.

Section of interior walls:

Option 1:
pine cladding



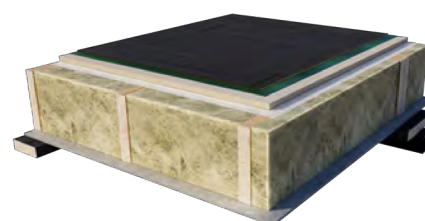
Option 2:
finishing with paintable drywall



4. Basic floor construction class A/A+

Base of the floor is moisture resistant plywood P=750 kg/m³, 21 mm ;
 Insulation of the frame: vapor barrier – P=90 g/m², 1 mm.
 Reinforced frame: antiseptic planed bar 50×300 mm, pine.
 Thermal insulation: cellulose 30-35 kg/m³ – 300 mm.
 External insulation of the frame: cement particle board – P=1250 kg/m³, 10 mm.
 The contour of the elements of the wooden floor platform - 45 mm, pine
 The lining bar is antiseptic and painted black - 20-120 mm., 50-150 mm.
 Protection from mice is along the contour of the ventilated facade at the bottom.

The floor section. Class A / A+



Can be expanded

Small modular house can become a temporary house during construction of the main house, and then turn into a cozy guest house, or become the main house that can be expanded and developed.

5. Windows and entrance doors:

Wooden frames 78 mm with double sealing contour. Double-glazed windows filled with argon - 44 mm.

Formula of double-glazed windows in windows: 4ix16x4x16x4i. U = 1.00. Factory painted in graphite gray RAL 7024.

Roto NT fittings. The doors have reinforced hinges and a mortise lock.

Stained glass glazing:

Reinforced double-glazed windows, filled with argon - 44 mm. Formula of double-glazed windows in stained-glass glazing: 6i × 14 × 4 × 14 × 6i tempered glass.

6. Other:

Sink tap: Grohe, chrome.

Wash basin in the bathroom: Cersanit/ Villeroy&Boch Avento 60x47 furniture set with a drawer

Toilet bowl: Cersanit Carina/Villeroy&Bosh O.novo.

Shower tap: Grohe, chrome, with Grohe shower set.

Shower room:

– bathroom 700×1700 mm with a front panel;





or
 – shower area glazing: 10 mm thick tempered glass, 1900×850 mm, transparent, colorless, in a set with metal profile for fixing to the floor and to the wall.

Storage water heater: Electrolux EWH 100 Royal Flash Silver.

Kitchen arrangement (for laying communications): outputs of water supply and sewerage; output for the sink; output electric cable for connecting the kitchen hob, refrigerator, kitchen hood.

Additional expenses:

delivery from the seller's warehouse to the building site
 (calculated individually);
 installation on the building site;
 crane rental 25 t for installation works;
 installation of the foundation on the site.

Additional production is possible: porch, stairs, terraces, veranda.

All wood used for production of the houses goes through technical drying and has humidity of 15-18%.

The elements are covered with antiseptic bioprotectant, and on the end are covered with a special anti-cracking protective agent.



KOSHAUS-53

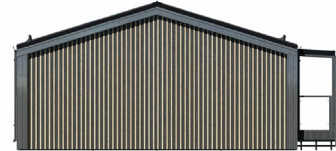
has everything you need for a comfortable stay of one person of any age or a married couple without children.

The house has one bedroom, an entrance hall, a bathroom, a kitchen combined with a spacious living room, which compactly accommodates a dining area, a TV-zone, a fireplace area and a storage area. In future, the house can be easily increased in length. It is possible to make this model a two-storey house.

BUILT-UP AREA:	94,1 m ²
HOUSE DIMENSIONS (H×W×L):	4×9,38×10,03 m
USEFUL AREA:	49 m ²
VERANDA AREA:	27 m ²
CEILING HEIGHT:	2,39-3,54m



FACADE:



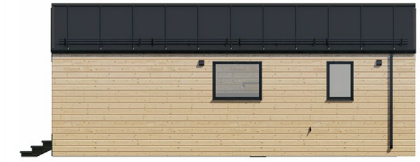
Type-1: roof metal profile,
facade metal profile



Type-2: roof click fold, facade
click fold



Type-3: the roof is a click fold,
the facade is a tree horizontally



Type-4: the roof is a click fold,
the facade is a tree vertically



Type-5: roof palatinate,
facade wood mix



Type-6: roof metal profile,
facade metal profile 1/2 +
wood horizontally 1/2



Type-7: roof metal profile,
facade metal profile 1/2 +
wood vertically 1/2



Type-8: roof metal profile,
facade metal profile 1/2 +
wood vertically 1/2



Type-9: roof click fold, facade click
fold 1/2 + tree horizontally 1/2



Type-10: roof click fold,
facade click fold 1/2 + tree
vertically 1/2

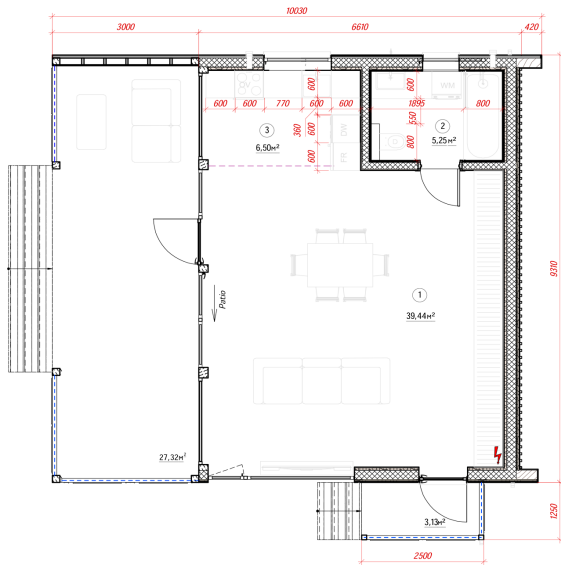


Type-11: roof click fold,
facade click fold 1/2 + wood
mix 1/2

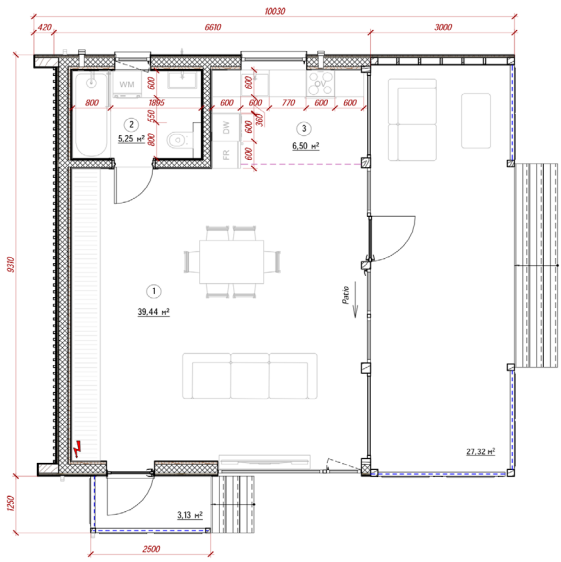


PLAN:

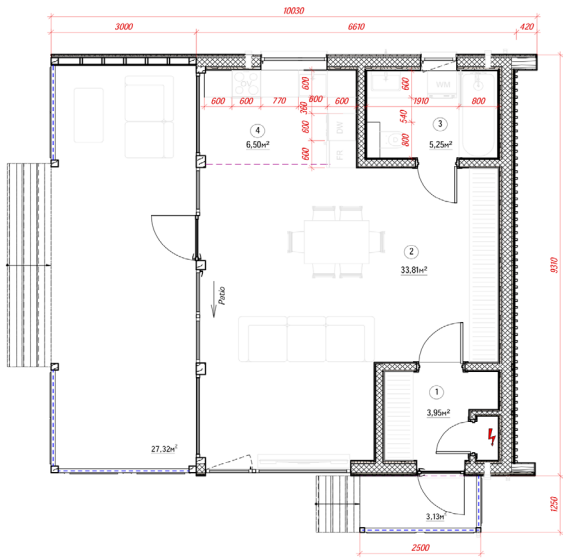
KOSHAUS-53_V1.1.L



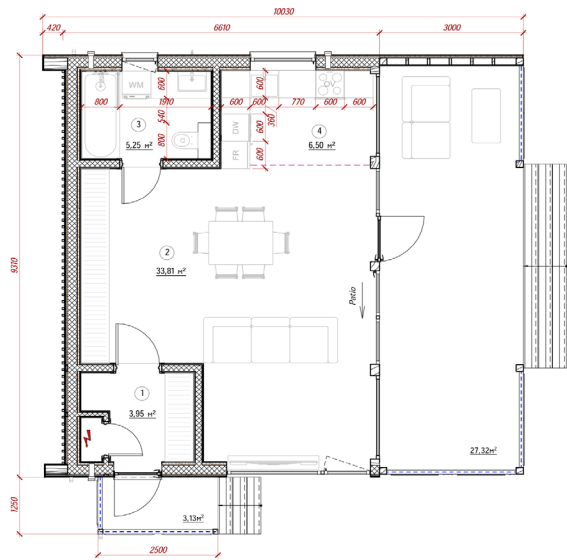
KOSHAUS-53_V1.1.R



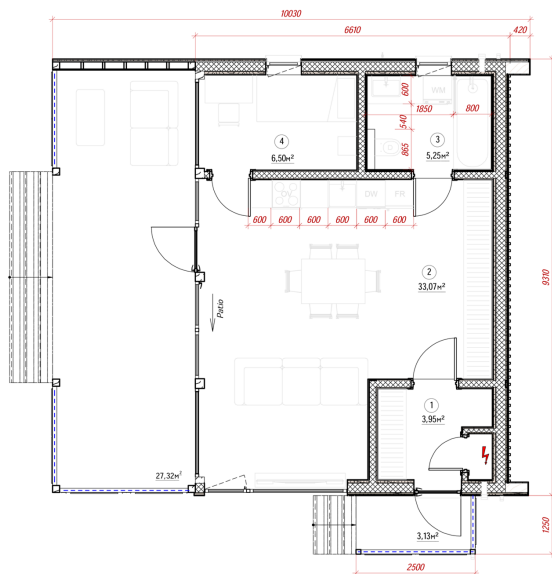
KOSHAUS-53_V2.1.L



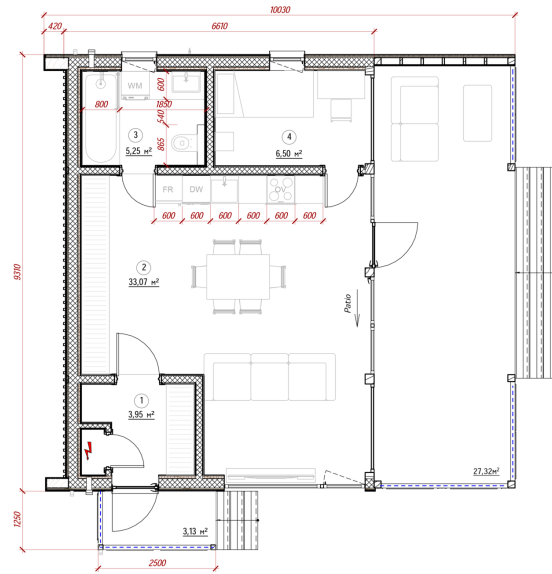
KOSHAUS-53_V2.1.R



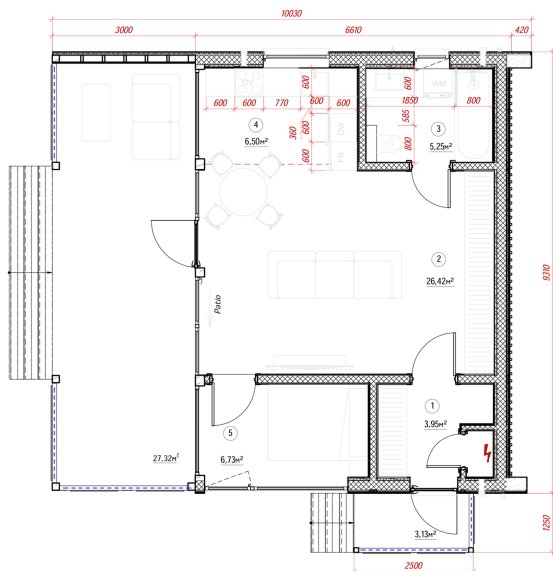
KOSHAUS-53_V3.1.L



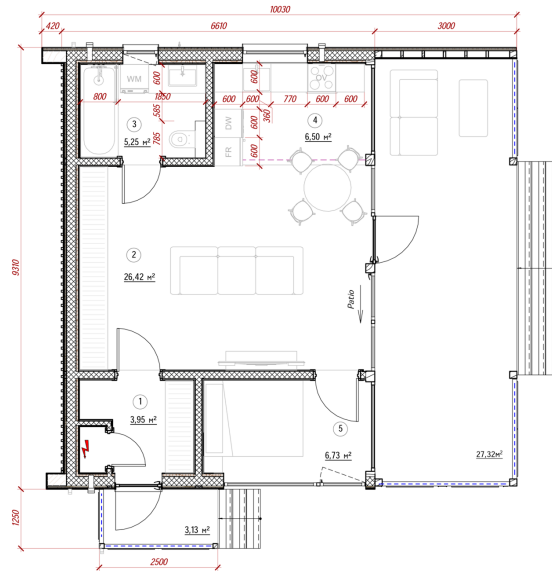
KOSHAUS-53_V3.1.R



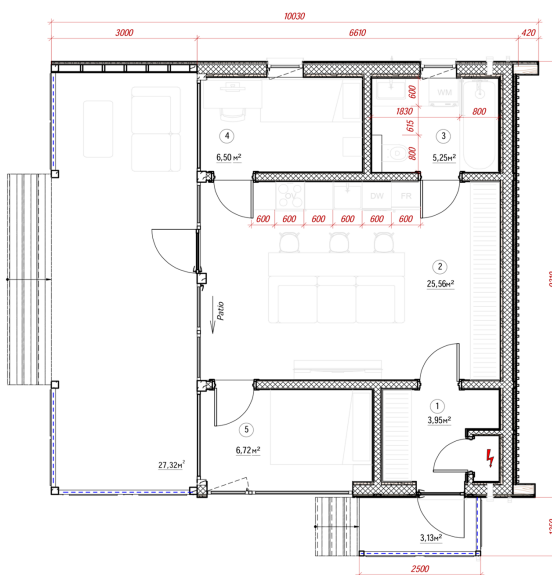
KOSHAUS-53_V4.1.L



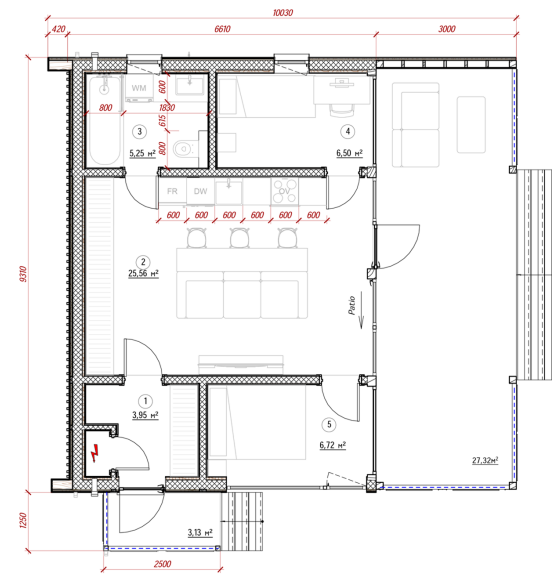
KOSHAUS-53_V4.1.R



KOSHAUS-53_V5.1.L



KOSHAUS-53_V5.1.R





KOSHAUS-78

is designed for people who appreciate every corner of a private house.

The useful area of the house of 74 m² compactly places everything necessary for comfortable living of a standard family of up to 4 people. 2 bedrooms, a separate entrance hall, a large bathroom, a kitchen, a bright living room with panoramic windows and a huge veranda will satisfy the needs of any family. In various versions of the layouts the hallway is provided from different sides of the house.

BUILT-UP AREA:

124,2 m²

HOUSE DIMENSIONS (H×W×L):

4×9,38×13,24 m

USEFUL AREA:

74,2 m²

VERANDA AREA:

27 m²

CEILING HEIGHT:

2,39-3,54 m



FACADE:



Type-1: roof metal profile,
facade metal profile



Type-2: roof click fold, facade
click fold



Type-3: the roof is a click fold,
the facade is a tree
horizontally



Type-4: the roof is a click fold,
the facade is a tree
vertically



Type-5: roof palatinate,
facade wood mix



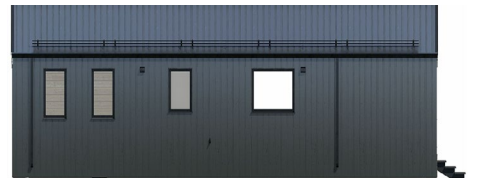
Type-6: roof metal profile,
facade metal profile 1/2 +
wood horizontally 1/2



Type-7: roof metal profile,
facade metal profile 1/2 +
wood vertically 1/2



Type-8: roof metal profile,
facade metal profile 1/2 +
wood vertically 1/2



Type-9: roof click fold, facade click
fold 1/2 + tree horizontally 1/2



Type-10: roof click fold,
facade click fold 1/2 + tree
vertically 1/2

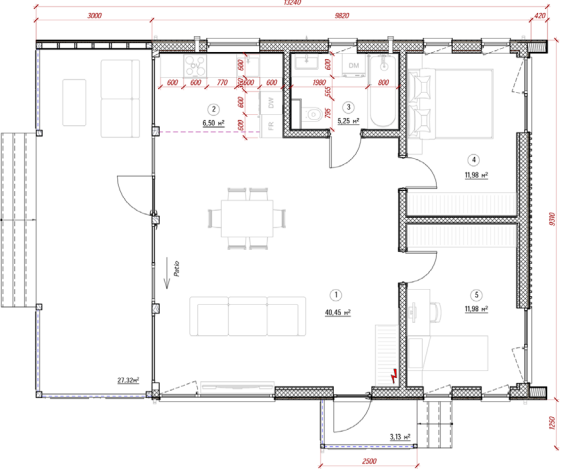


Type-11: roof click fold,
facade click fold 1/2 + wood
mix 1/2

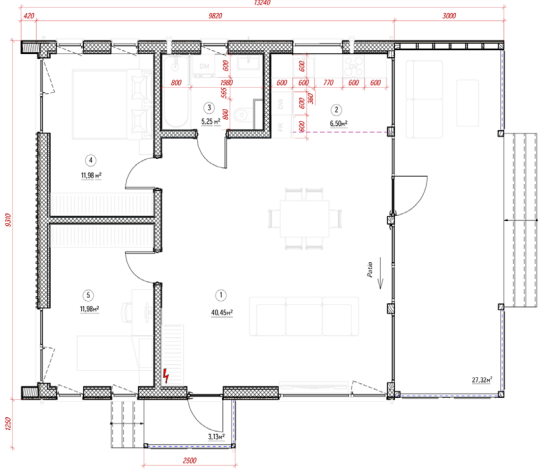


PLAN:

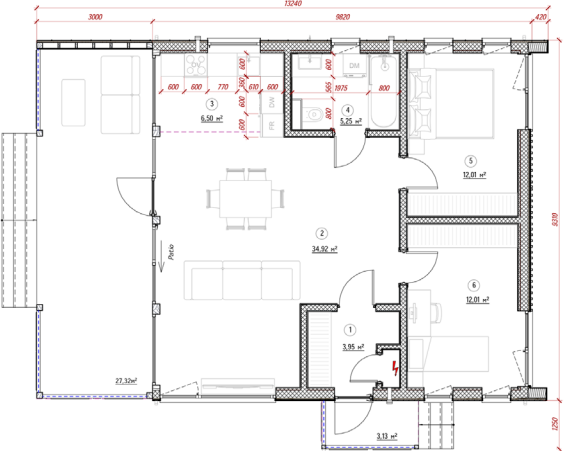
KOSHAUS-78_V1.1.L



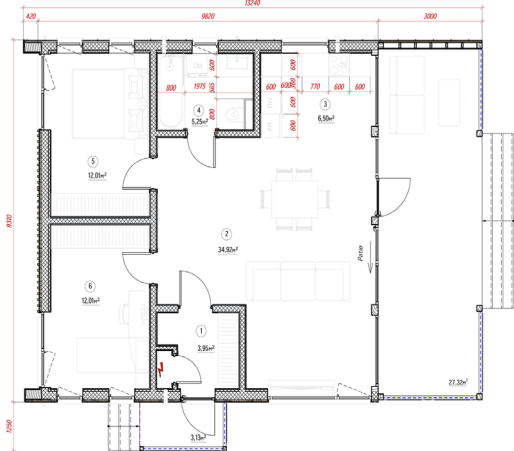
KOSHAUS-78_V1.1.R



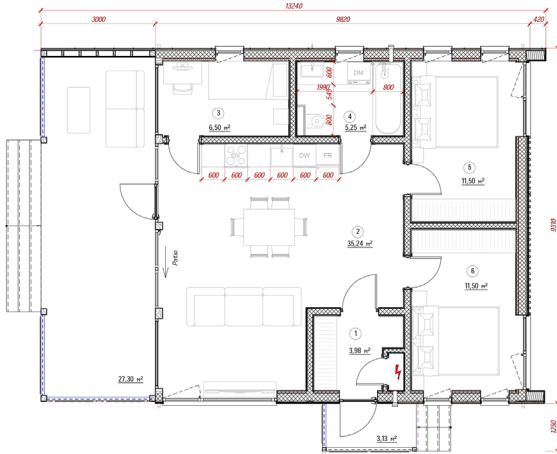
KOSHAUS-78_V2.1.L



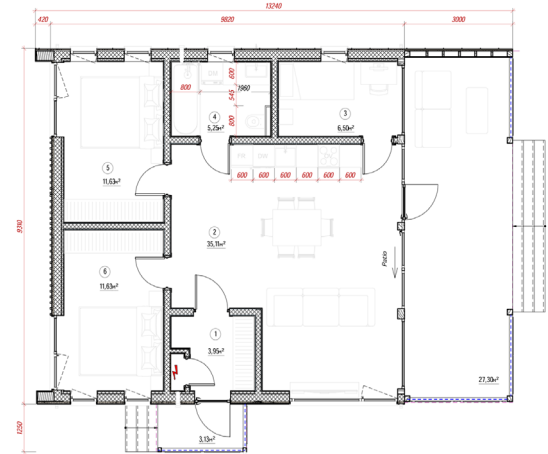
KOSHAUS-78_V2.1.R



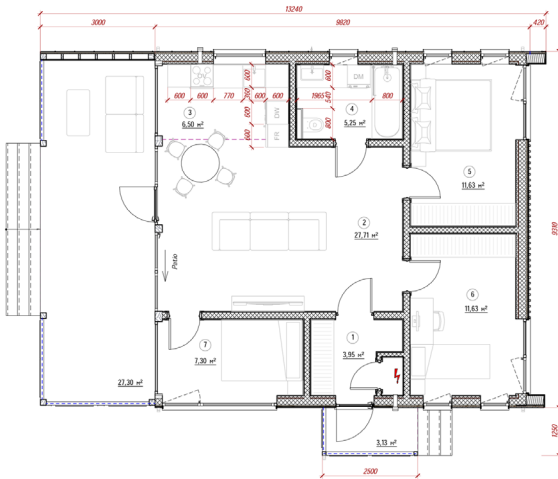
KOSHAUS-78_V3.1.L



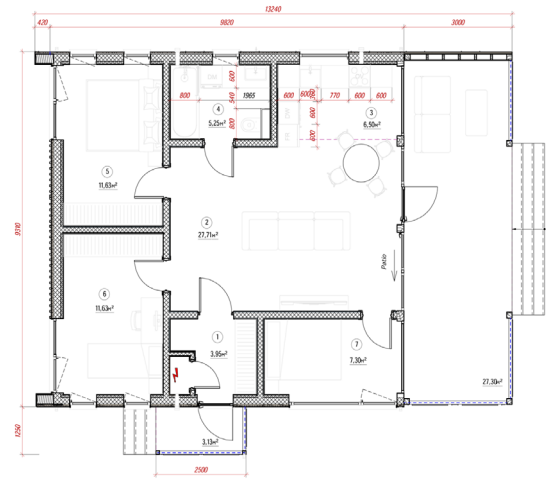
KOSHAUS-78_V3.1.R



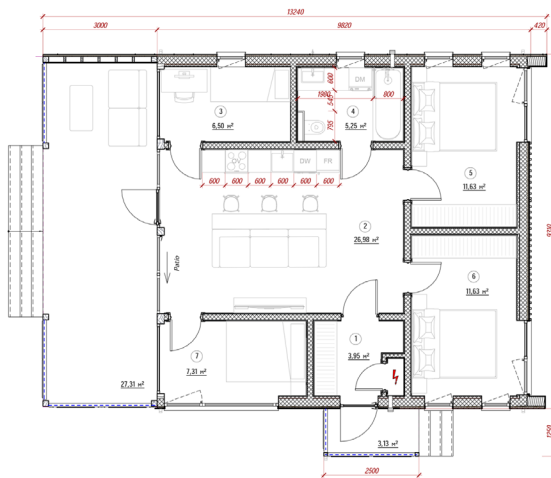
KOSHAUS-78_V4.1.L



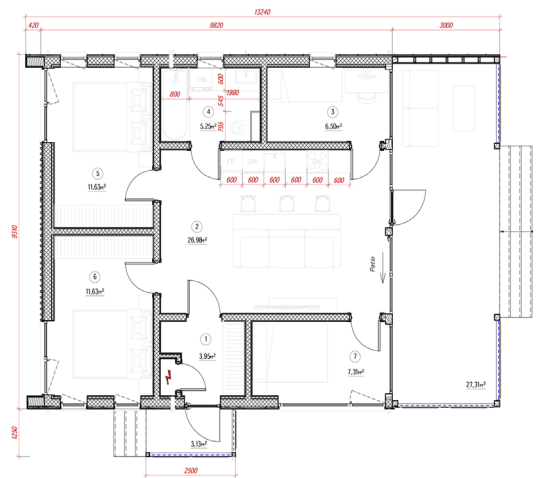
KOSHAUS-78_V4.1.R



KOSHAUS-78_V5.1.L



KOSHAUS-78_V5.1.R





KOSHAUS-106

is a comfortable house with a spacious bedroom and a children's room.

The useful area of the house is 101.90 m2. A separate room between the bathroom and the bedroom has several possible functions: entrance hall, when arranging the entrance from the upper part of the house, storage room, second bathroom, sauna, study room, small living room, stairs to the second floor or any other room. A large veranda will always please all family members and guests, and panoramic windows will always fill the house with light.

BUILT-UP AREA:	155,6 m ²
HOUSE DIMENSIONS (H×W×L):	4×9,38×16,59 m
USEFUL AREA:	101,8 m ²
VERANDA AREA:	27 m ²
CEILING HEIGHT:	2,39-3,54 m



FACADE:



Type-1: roof metal profile,
facade metal profile



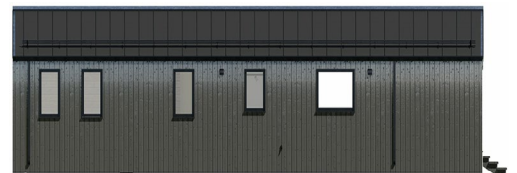
Type-2: roof click fold, facade
click fold



Type-3: the roof is a click fold,
the facade is a tree
horizontally



Type-4: the roof is a click fold,
the facade is a tree
vertically



Type-5: roof palatinate,
facade wood mix



Type-6: roof metal profile,
facade metal profile 1/2 +
wood horizontally 1/2



Type-7: roof metal profile,
facade metal profile 1/2 +
wood vertically 1/2



Type-8: roof metal profile,
facade metal profile 1/2 +
wood vertically 1/2



Type-9: roof click fold, facade click
fold 1/2 + tree horizontally 1/2



Type-10: roof click fold,
facade click fold 1/2 + tree
vertically 1/2

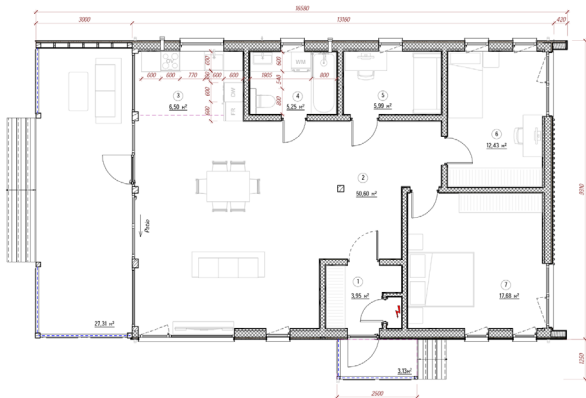


Type-11: roof click fold,
facade click fold 1/2 + wood
mix 1/2

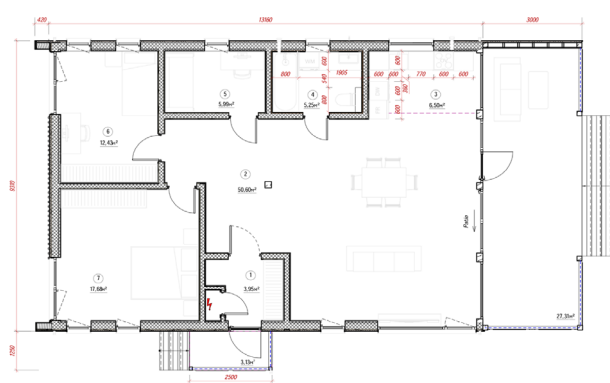


PLAN:

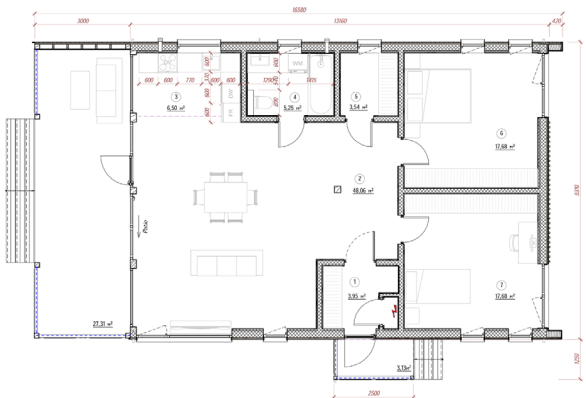
KOSHAUS-106_V1.1.L



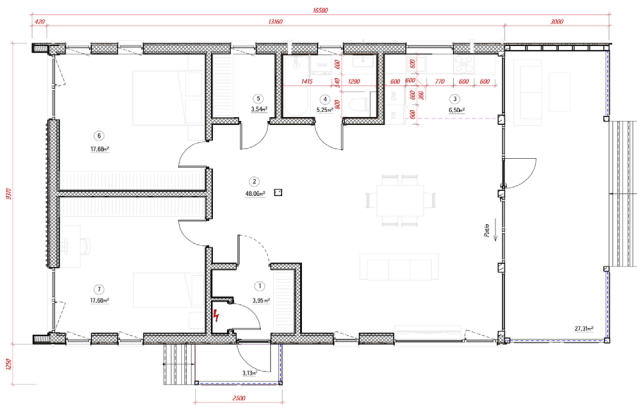
KOSHAUS-106_V1.1.R



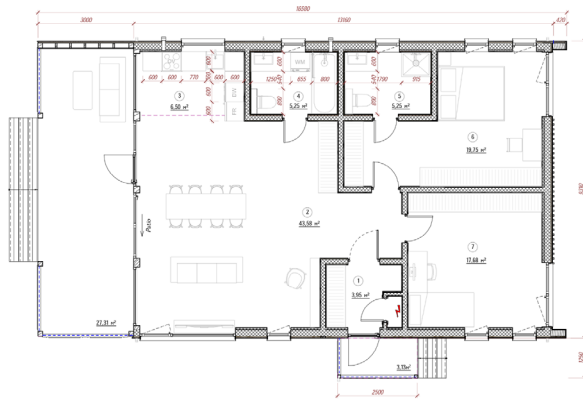
KOSHAUS-106_V2.1.L



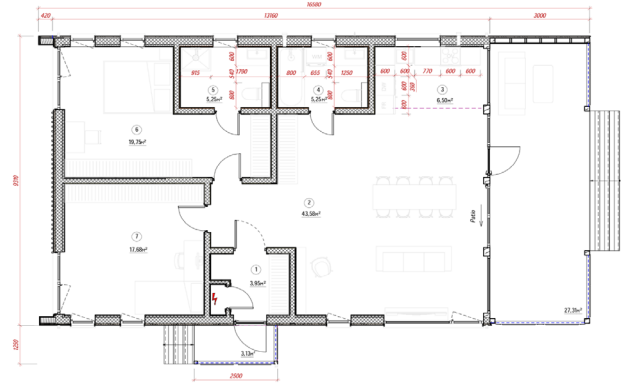
KOSHAUS-106_V2.1.R



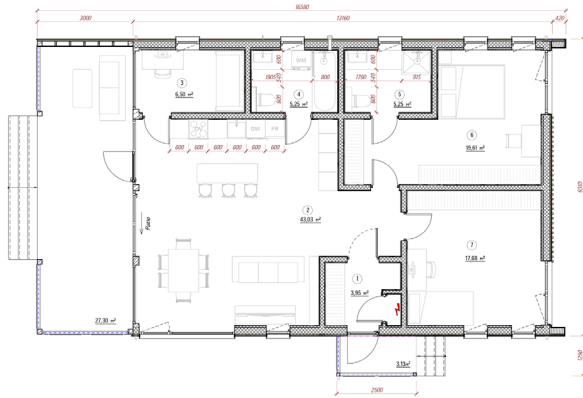
KOSHAUS-106_V3.1.L



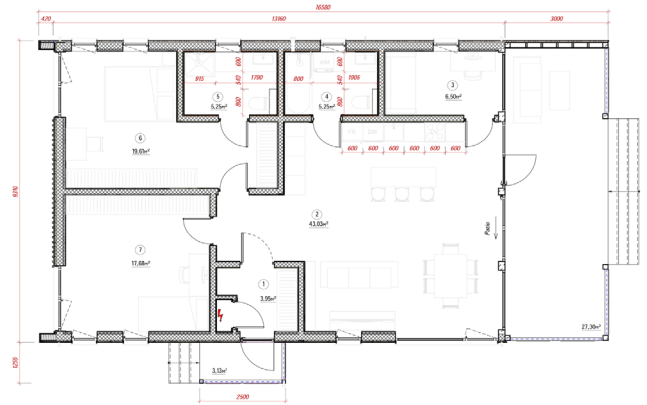
KOSHAUS-106_V3.1.R



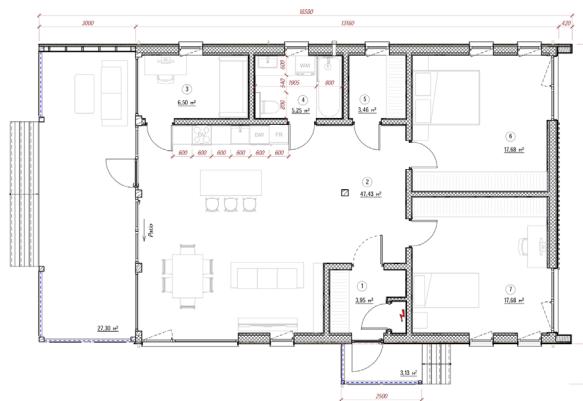
KOSHAUS-106_V4.1.L



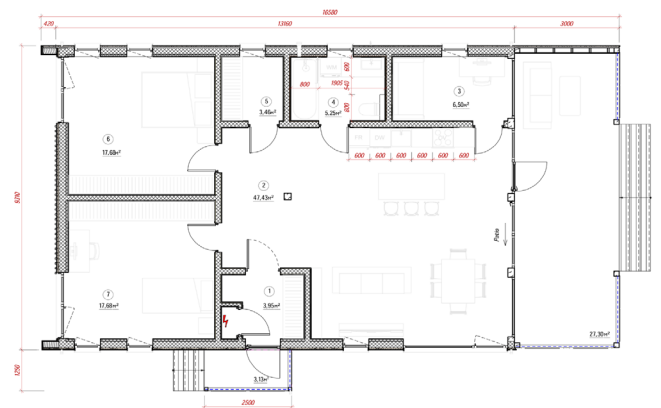
KOSHAUS-106_V4.1.R



KOSHAUS-106_V5.1.L



KOSHAUS-106_V5.1.R





KOSHAUS-132

is designed specifically for a big family.

The useful area of the house is 126.40 m² with a spacious veranda of 28.40 m² will accommodate not only a big family, but, if necessary, the same number of guests. 4 bedrooms, living room, kitchen, bathroom, storage room, vestibule. Veranda is a place for summer rest. The area of the house allows you to place 2 more bathrooms, a sauna or an office. There are various options for the house layout and orientation of the main facade.

BUILT-UP AREA:	185,3 m ²
HOUSE DIMENSIONS (H×W×L):	4×9,38×19,75 m
USEFUL AREA:	125,8 m ²
VERANDA AREA:	27 m ²
CEILING HEIGHT:	2,39-3,54 m



FACADE:



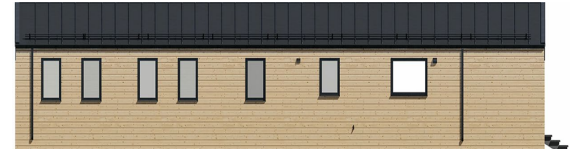
Type-1: roof metal profile,
facade metal profile



Type-2: roof click fold,
facade click fold



Type-3: the roof is a click fold,
the facade is a tree horizontally



Type-4: the roof is a click fold,
the facade is a tree vertically



Type-5: roof palatinate,
facade wood mix



Type-6: roof metal profile,
facade metal profile 1/2 +
wood horizontally 1/2



Type-7: roof metal profile,
facade metal profile 1/2 +
wood vertically 1/2



Type-8: roof metal profile,
facade metal profile 1/2 +
wood vertically 1/2



Type-9: roof click fold,
facade click fold 1/2 + tree
horizontally 1/2



Type-10: roof click fold,
facade click fold 1/2 + tree
vertically 1/2

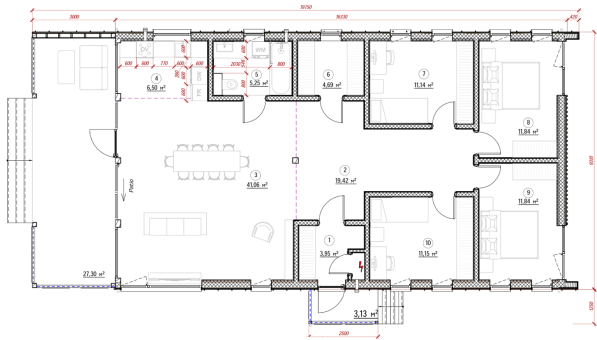


Type-11: roof click fold,
facade click fold 1/2 + wood
mix 1/2

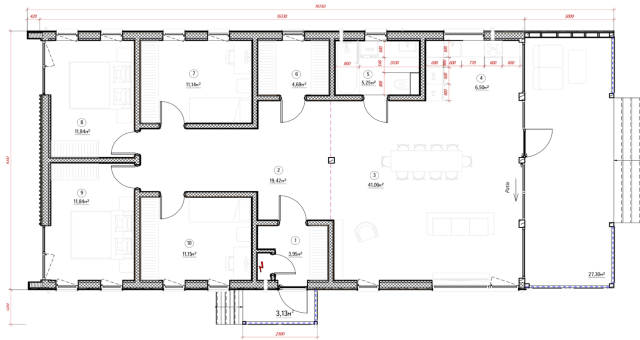


PLAN:

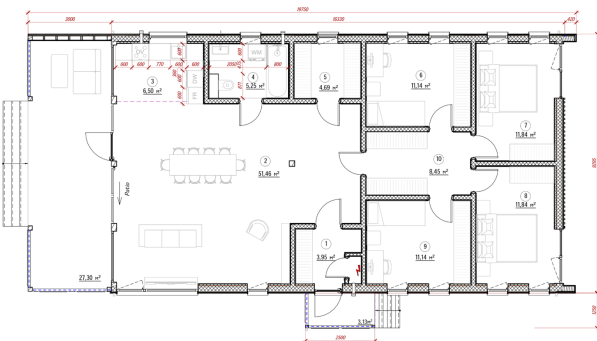
KOSHAUS-132_V1.1.L



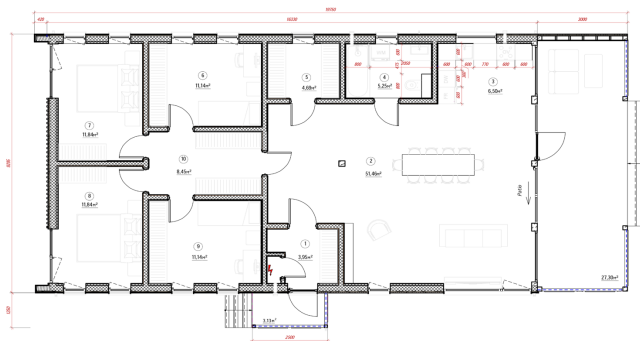
KOSHAUS-132_V1.1.R



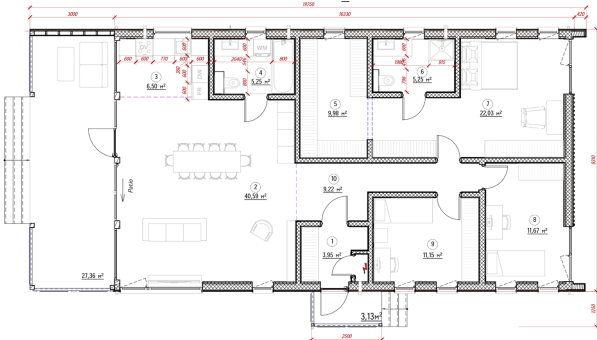
KOSHAUS-132_V2.1.L



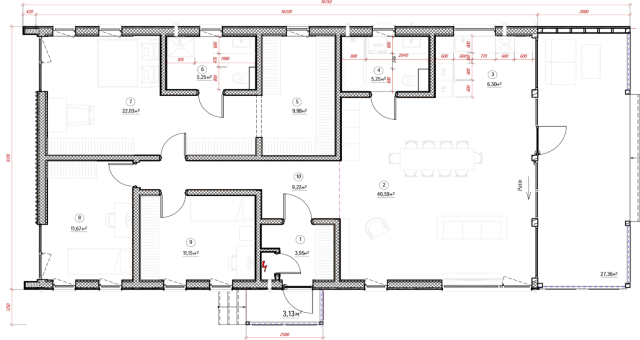
KOSHAUS-132_V2.1.R



KOSHAUS-132_V3.1.L



KOSHAUS-132_V3.1.R





Calculate the cost of the house yourself using
the online calculator: calc.vithaus.eu
For any questions do not hesitate to contact us!



SIA VITHAUS
Legal address:
Rīga, Matisa iela 61-28
Tel.: +371 29 898828
office@vithaus.eu

vithaus.eu